

The ClassLink Information Console (CLiC™)

Manage Your ClassLink Universal Learning Environment with just one CLiC



Universal Learning Environments

- Where students, teachers, parents and administrators are seamlessly connected to the applications they need and to each other through a single desktop interface
- Maximizes a school or district's investment in, and management of, educational technology
- Enables communication, collaboration, creation, assessment and reporting in support of student achievement

The ClassLink Information Console (CLiC) promotes a Universal Learning Environment by enabling IT administrators to build and manage the most scalable application server based platform available to the K-12 educational market today.

CLiC allows a school district to fully leverage its existing instructional technically environment and combines a variety of needed tools and features into one, easy-to-use interface.

“The tools in CLiC simplify complicated tasks and automate routine exercises; significantly reducing time spent troubleshooting and diminishing the chances for potentially costly errors.”

Dynamic Desktop™

With Dynamic Desktop, IT administrators can manage application access like never before. Software delivery is as simple as ‘drag and drop.’ Now when students and teachers login, their customized desktop is dynamically populated with applications and resources based on who they are, what group they belong to, where they are and even more variables. Schools now have maximum flexibility to dynamically deliver access to their software investment.



License Metering

ClassLink clients know that they are in compliance with software licensing agreements at all times. Administrators can specify the number of concurrent users for any application installed on the ClassLink system. Further, schools can audit, at any time, their license utilization to better gauge software demand. Now the guesswork is gone from software purchasing.



The ClassLink Information Console (CLiC™)

Manage Your ClassLink Universal Learning Environment with just one CLiC



Managing User Accounts

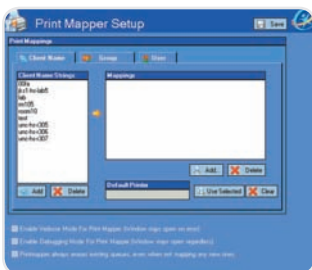
In a windows network, creating and managing user accounts in active directory can be a time consuming and error prone exercise. With CLiC, IT administrators can simplify the process

of creating and managing new user accounts for teachers and students and:

- Create and manage reusable network account templates
- Synchronize existing active directory entries to the SIS
- Auto generate new user accounts with proper permissions and a defined username scheme
- Permit targeted teachers to easily and safely reset a student's password with one click

Application Access Control

Administrators can easily specify which users or groups should have access to specific applications. For example, there may be a need to disable access to a software title for all users except the specific students enrolled in the course. With CLiC it's easy.



Print Mapper™

Print Mapper lets the IT administrator decide what printers are available when, and to which users. When students work in the media center, their printing options can be limited to printers only located in the media

center. Print Mapper specifies which printers users will see depending on which classroom they are logged in from.

Server Alive™

Server Alive provides real time feedback to the IT administrator and ClassLink headquarters of mission critical conditions such as server health, system usage, drive space and more. Server Alive™ is monitored by ClassLink personnel at all times and enables the ClassLink team to proactively diagnose and respond to mission critical events.



Event Grabber

The Event Grabber utility provides daily reports of server events including reboots, backup history and much more. ClassLink eliminates down time by responding to important events before they create any disturbance to the server environment.

Task Manager

The Task Manager puts in place a whole new layer of security by providing a filtered view of the processes and applications normally accessibly by students when they launch Windows task manager.

